

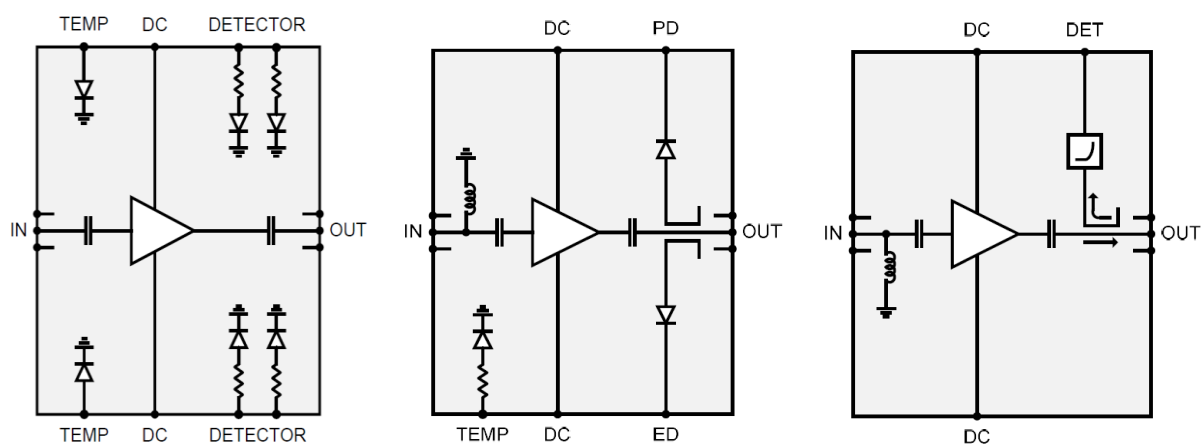


gotMiC – Шведская компания разработчик и производитель монолитных интегральных схем устройств миллиметрового диапазона длин волн. Производит компоненты для диапазонов от 50ГГц до 170ГГц в формате кристаллов, а также в корпусированном виде.

<http://www.gotmic.se/>

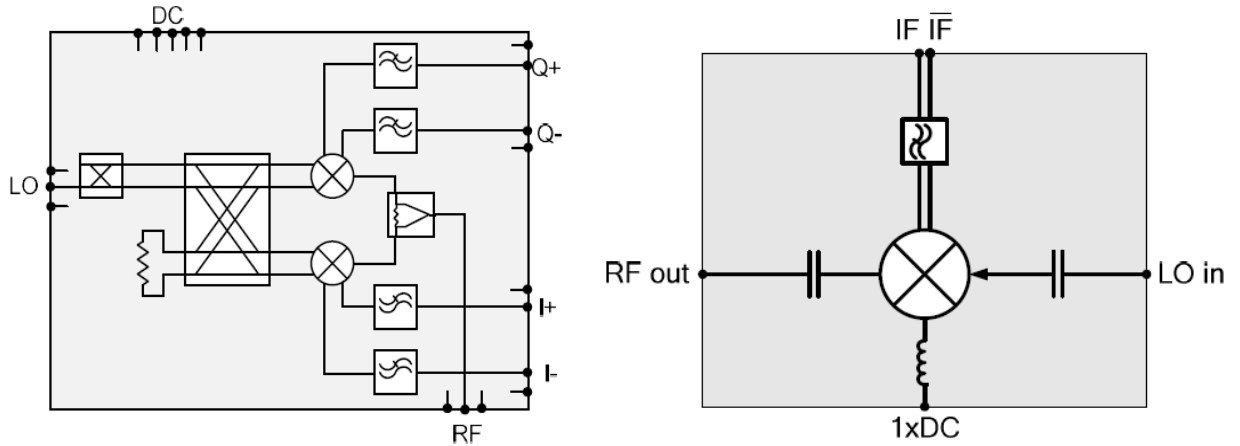
Arvid Hedvalls Backe 4 S-411 33 Gothenburg, Sweden

### Усилители мощности



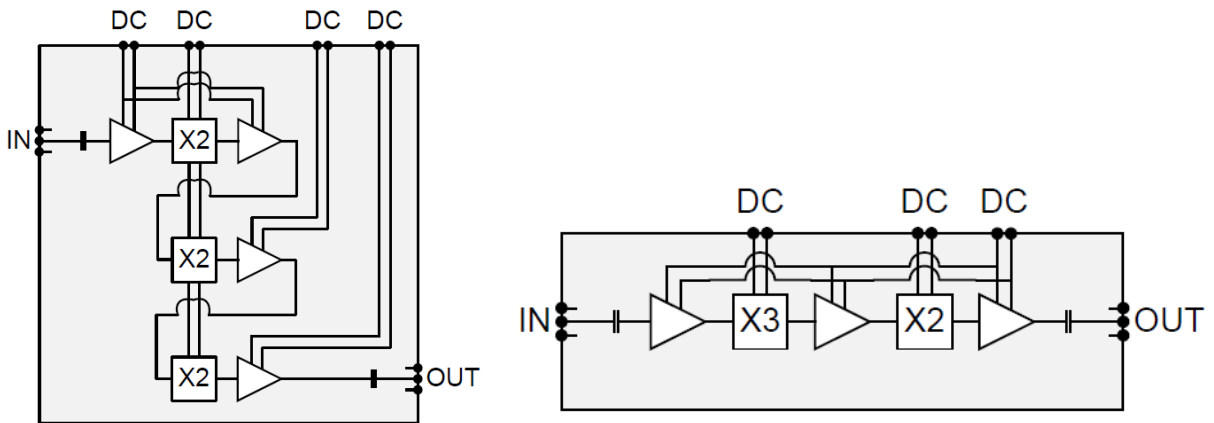
Part number	Type	Freq [GHz]	Gain [dB]	RL in/out [dB]	P1dB [dBm]	OIP3 [dBm]	NF [dB]
gANZ0031	LNA	57-66 (52-72)	21	>10/>15	10	20	3,5
gANZ0032	LNA	70-80	20	>8/>15	12	22	4
gANZ0033	LNA	77-86	23	>10/>15	10	20	5
gANZ0017	LNA	75-110	17	>5/>5	10	-	5
gANZ0012	MPA	65-90	13	>4/>10	14	22	6
gAPZ0038	PA	55-71	18	>8/>10	20	31	-
gAPZ0039	PA	52-72	19	>8/>12	24	32	-
gAPZ0018	MPA	71-86	16	>7/>10	10	20	-
gAPZ0033	MPA	71-86 (68-89)	25	>10/>10	17	27	-
gAPZ0051/71	PA	71-76 (68-79)	21	>6/>7	26	>34	6
gAPZ0052/72	PA	81-86 (75-87)	21	>6/>6	26	>33	6
gAPZ0045	PA	92-96 (80-100)	18	>7/>6	22	-	8
gAPZ0081	PA	63-76	23	15/15	27,5	36	-
gAPZ0085	PA	81-86	16	15/15	26	36	-
gAPZ0095	PA	92-96 (85-100)	15	15/15	TBD (Psat - 28,5)	TBD	-

## Смесители



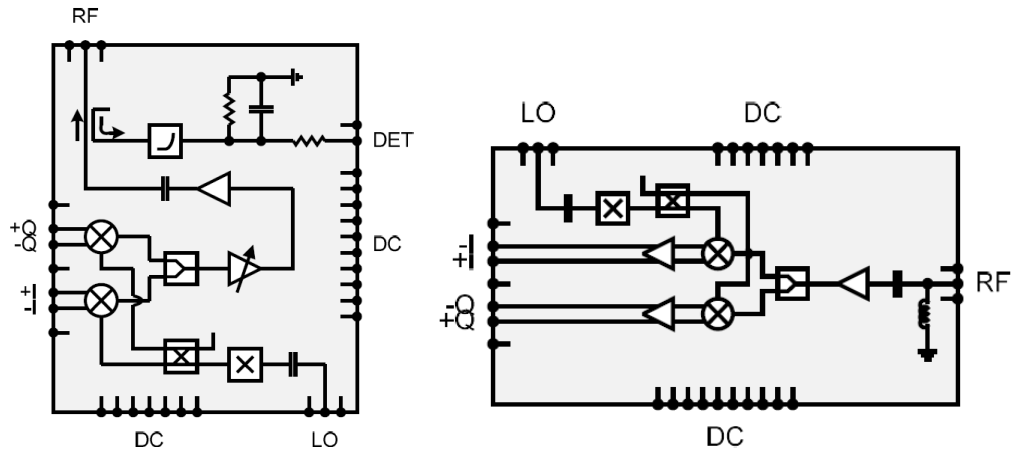
Part number	Type	RF BW [GHz]	IF BW [GHz]	CL [dB]	IRR [dB]	LO-RF isolation [dB]	LO power [dBm]
gMBR0011	Balanced mixer	70-100	0-12	10	-	>27	7
gMQR0011	IQ mixer	70-95	0-12	10	>24	-	5
gMDR0027	IQ mod/demod	57-66 (52-72)	0-12	9	>25	>40	10
gMDR0015	IQ mod/demod	71-86	0-12	10	>25	>40	7
gMDR0013	IQ mod/demod	70-100	0-12	10	>25	>40	7
gMDR0035	IQ mod/demod	140-170	0-6	12	>15	>35 (2*LO-RF)	15

## Умножители частоты



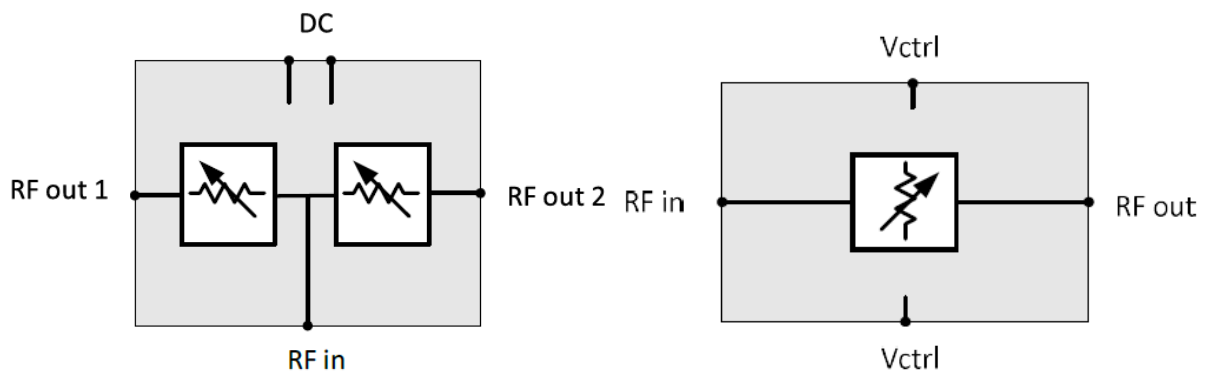
Part number	Type	Freq [GHz]	CL [dB]	Pin [dBm]	Pout [dBm]	Harmonic suppression [dB]
gXSB0024	x6	57-66 (52-72)	-11	5	16	>35
gXSB0019	x6	57-66 (52-72)	2	10	8	>15
gXSB0015	x6	71-86	3	10	7	>10
gXSB0025	x6	71-86 (68-88)	-9	5	14	>30
gXOB0013	x8	82-91 (80-94)	-1	10	11	>20
gXOB0017	x8	86-106 (81-110)	-12	0	12	>20

## Передатчики и приемники



Part number	Type	RF BW [GHz]	IF BW [GHz]	CG <sub>max</sub> [dB]	OIP <sub>3max</sub> [dBm]	NF [dB]
gTSC0020	TX	57-66 (52-72)	0-12	22	26	-
gTSC0023	TX	71-86	0-12	21	26	-
gRSC0016	RX	57-66 (52-72)	0-12	15	13	4
gRSC0012	RX	71-76	0-12	25	23	5,5
gRSC0013	RX	81-86	0-12	25	24	5,5
gRSC0014	RX	71-76	0-12	13	10	5,5
gRSC0015	RX	81-86	0-12	15	12	5,5
gRCQ0016	RX	71-86	0-12	8	8	6

## Переключатели



Part number	Type	Freq [GHz]	loss [dB]	Isolation [dB]	RL on/off [dB]
gSSS0013	SPST	40-110	<2.5	>25	>12/>10
gSSS0015	SPST	40-110	<2.5	>26	>12/>10
gSSD0011	SPDT	32-110+	5	>20	>10/>8